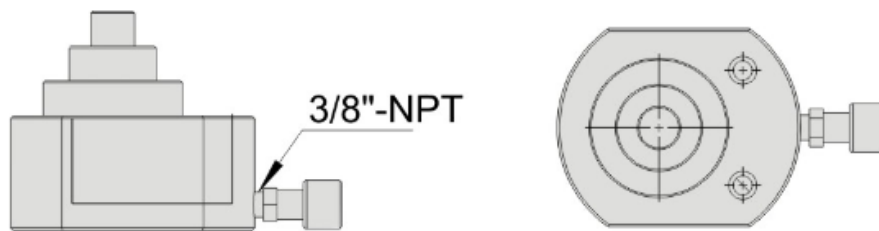



RSMB SERIES

Specifications

Inquiry

- Compact, flat design to use the place of most other cylinders will not fit
- Single-acting, gravity retraction
- Mounting holes permit easy fixturing
- Baked enamel finish for increased corrosion resistance
- Hard chrome plated high quality steel plungers
- Grooved plunger ends require no saddle



Model	Output (T)	Stroke (mm)	Collapsed Height (mm)	Oil Cap. (cc)	Extended Height (mm)	Outside Diameter X Flat side (mm)	 (kg)
RSMB-100	10	25	42	22	67	Ø82×55	1.5
RSMB-200	20	26	51	41	77	Ø101×76	2.4
RSMB-300	30	53	58	58	111	Ø117×95	4.5
RSMB-500	50	64	66	113	130	Ø140×114	7.0