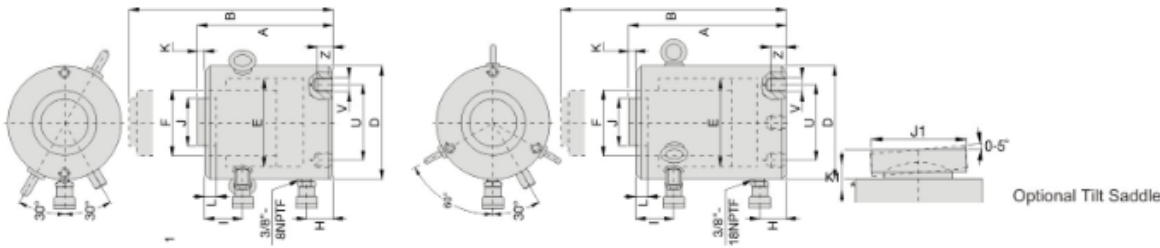


# CLRG SERIES



- Double-acting, for positive retraction
- Integral stop ring provides piston blow-out protection
- Safety valve in retract side of cylinder helps to prevent damage in case of accidental over-pressurization
- Plunger wiper reduces contamination, extending cylinder life
- Baked enamel finish and plated pistons provide superior corrosion resistance



Cylinder Capacity ton (kn)	Stroke (mm)	Model	Maximum Cylinder Capacity (kn)		Cylinder Effective Area (cm <sup>2</sup> )		Oil Capacity (cm <sup>3</sup> )		Collaps. Height A (mm)	Extend Height B (mm)	Outside Dia. D (mm)	Cyl. Bore Dia. E (mm)	Plunger Dia. F (mm)	Base to Advance Port H (mm)	Top to Retract Port I (mm)	Standard Saddle Dia. J (mm)	Saddle Prot. from Plgr. K (mm)	Depth of Plunger Hole L (mm)	Weight (kg)	Optional Tilt Saddle *			
			Push	Pull	Push	Pull	Push	Pull												Saddle Dia. J1 (mm)	Saddle Height K1 (mm)	Saddle Model Number	
			3/8" BNPITF	3/8" BNPITF	3/8" BNPITF	3/8" BNPITF	3/8" BNPITF	3/8" BNPITF												0-5°			
50	50	CLRG-502	539	269	77.0	38.5	385	192	162	212	130	99	70	52	33	50	1	19	17	CLRG-502	50	24	CATG-50
	100	CLRG-504	539	269	77.0	38.5	770	385	212	312	130	99	70	52	33	50	1	19	20	CLRG-504	50	24	CATG-50
	150	CLRG-506	539	269	77.0	38.5	1155	577	262	412	130	99	70	52	33	50	1	19	23	CLRG-506	50	24	CATG-50
	200	CLRG-508	539	269	77.0	38.5	1540	770	312	512	130	99	70	52	33	50	1	19	27	CLRG-508	50	24	CATG-50
	250	CLRG-5010	539	269	77.0	38.5	1924	962	362	612	130	99	70	52	33	50	1	19	31	CLRG-5010	50	24	CATG-50
	300	CLRG-5012	539	269	77.0	38.5	2309	1155	412	712	130	99	70	52	33	50	1	19	34	CLRG-5012	50	24	CATG-50
100	50	CLRG-1002	929	433	132.7	61.9	664	309	179	229	165	130	95	54	48	75	1	19	29	CLRG-1002	73	29	CATG-100
	100	CLRG-1004	929	433	132.7	61.9	1327	619	229	329	165	130	95	54	48	75	1	19	34	CLRG-1004	73	29	CATG-100
	150	CLRG-1006	929	433	132.7	61.9	1991	928	279	429	165	130	95	54	48	75	1	19	40	CLRG-1006	73	29	CATG-100
	200	CLRG-1008	929	433	132.7	61.9	2655	1237	329	529	165	130	95	54	48	75	1	19	46	CLRG-1008	73	29	CATG-100
	250	CLRG-10010	929	433	132.7	61.9	3318	1546	379	629	165	130	95	54	48	75	1	19	52	CLRG-10010	73	29	CATG-100
	300	CLRG-10012	929	433	132.7	61.9	3982	1856	429	729	165	130	95	54	48	75	1	19	58	CLRG-10012	73	29	CATG-100
150	50	CLRG-1502	1390	675	198.6	96.5	993	482	196	246	205	159	114	61	56	94	1	19	39	CLRG-1502	91	31	CATG-150
	100	CLRG-1504	1390	675	198.6	96.5	1986	965	246	346	205	159	114	61	56	94	1	19	52	CLRG-1504	91	31	CATG-150
	150	CLRG-1506	1390	675	198.6	96.5	2978	1447	296	446	205	159	114	61	56	94	1	19	65	CLRG-1506	91	31	CATG-150
	200	CLRG-1508	1390	675	198.6	96.5	3971	1930	346	546	205	159	114	61	56	94	1	19	78	CLRG-1508	91	31	CATG-150
	250	CLRG-15010	1390	675	198.6	96.5	4964	2412	396	646	205	159	114	61	56	94	1	19	92	CLRG-15010	91	31	CATG-150
	300	CLRG-15012	1390	675	198.6	96.5	5957	2895	446	746	205	159	114	61	56	94	1	19	105	CLRG-15012	91	31	CATG-150
200	50	CLRG-2002	1861	889	265.9	127.0	1330	635	212	262	235	184	133	67	66	113	1	24	55	CLRG-2002	118	35	CATG-200
	150	CLRG-2006	1861	889	265.9	127.0	3989	1905	312	462	235	184	133	67	66	113	1	24	91	CLRG-2006	118	35	CATG-200
	300	CLRG-20012	1861	889	265.9	127.0	7977	3809	462	762	235	184	133	67	66	113	1	24	146	CLRG-20012	118	35	CATG-200
250	50	CLRG-2502	2565	1068	366.4	152.6	1832	763	235	285	275	216	165	73	78	145	1	24	89	CLRG-2502	144	46	CATG-250
	150	CLRG-2506	2565	1068	366.4	152.6	5497	2289	335	485	275	216	165	73	78	145	1	24	136	CLRG-2506	144	46	CATG-250
	300	CLRG-25012	2565	1068	366.4	152.6	10993	4578	485	785	275	216	165	73	78	145	1	24	207	CLRG-25012	144	46	CATG-250
300	50	CLRG-3002	3193	1060	456.2	151.4	2281	757	322	372	310	241	197	101	75	177	1	19	184	CLRG-3002	160	62	CATG-300
	150	CLRG-3006	3193	1060	456.2	151.4	6843	2270	422	572	310	241	197	101	75	177	1	19	232	CLRG-3006	160	62	CATG-300
	300	CLRG-30012	3193	1060	456.2	151.4	13685	4541	572	872	310	241	197	101	75	177	1	19	303	CLRG-30012	160	62	CATG-300
400	50	CLRG-4002	3919	1354	559.9	193.5	2800	967	374	424	350	267	216	114	105	196	3	27	270	CLRG-4002	193	51	CATG-400
	150	CLRG-4006	3919	1354	559.9	193.5	8399	2902	474	624	350	267	216	114	105	196	3	27	330	CLRG-4006	193	51	CATG-400
	300	CLRG-40012	3919	1354	559.9	193.5	16797	5804	624	924	350	267	216	114	105	196	3	27	421	CLRG-40012	193	51	CATG-400
500	50	CLRG-5002	5114	1733	730.6	247.6	3653	1238	419	469	400	305	248	114	135	228	3	27	401	CLRG-5002	228	63	CATG-500
	150	CLRG-5006	5114	1733	730.6	247.6	10959	3713	519	669	400	305	248	114	135	228	3	27	480	CLRG-5006	228	63	CATG-500
	300	CLRG-50012	5114	1733	730.6	247.6	21918	7427	669	969	400	305	248	114	135	228	3	27	599	CLRG-50012	228	63	CATG-500
600	50	CLRG-6002	5987	2068	855.3	295.4	4276	1477	429	479	430	330	267	114	135	247	3	27	474	CLRG-6002	241	76	CATG-600
	150	CLRG-6006	5987	2068	855.3	295.4	12829	4431	529	679	430	330	267	114	135	247	3	27	565	CLRG-6006	241	76	CATG-600
	300	CLRG-60012	5987	2068	855.3	295.4	25659	8862	679	979	430	330	267	114	135	247	3	27	701	CLRG-60012	241	76	CATG-600
800	50	CLRG-8002	8234	2709	1176.3	387.0	5881	1935	484	534	505	387	317	149	135	297	3	27	741	CLRG-8002	287	75	CATG-800
	150	CLRG-8006	8234	2709	1176.3	387.0	17644	5806	584	734	505	387	317	149	135	297	3	27	868	CLRG-8006	287	75	CATG-800
	300	CLRG-80012	8234	2709	1176.3	387.0	35288	11611	734	1034	505	387	317	149	135	297	3	27	1058	CLRG-80012	287	75	CATG-800
1000	50	CLRG-10002	10260	3792	1465.7	541.7	7329	2709	564	614	560	432	343	174	170	323	3	27	1062	CLRG-10002	311	93	CATG-1000
	150	CLRG-10006	10260	3792	1465.7	541.7	21986	8126	664	814	560	432	343	174	170	323	3	27	1213	CLRG-10006	311	93	CATG-1000
	300	CLRG-100012	10260	3792	1465.7	541.7	43972	16252	814	1114	560	432	343	174	170	323	3	27	1439	CLRG-100012	311	93	CATG-1000